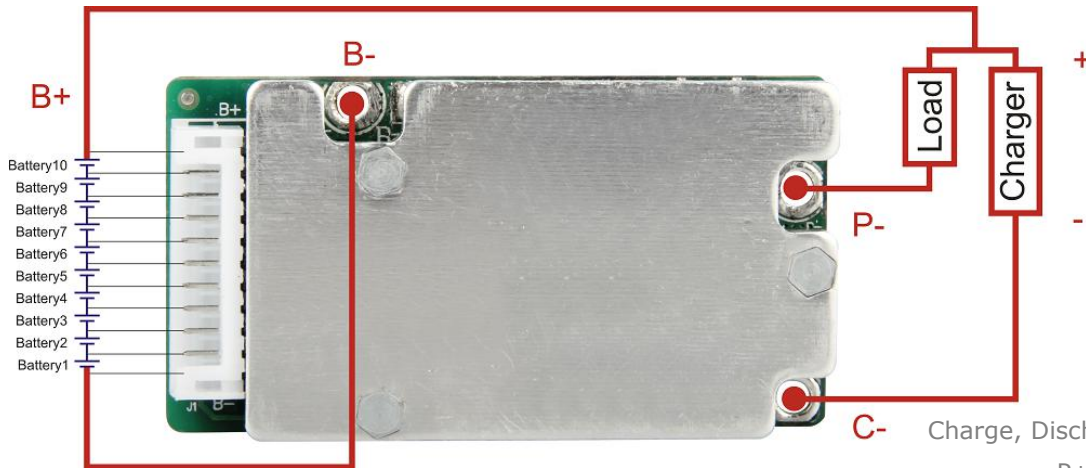


Data Sheet

Item	Contents		Criteria (Adjustable)
1	Model	HCX-D725V2 /SH367007 028XY AAD01	10S-5A working current
2	Voltage	Charging voltage	42V
3	Current	Maximal continuous charging current	5A (Charge Over Current \geq 14A)
		Maximal continuous discharging current	/
		Current consumption	\leq 100 μ A
4	Overcharge Protection	Over charge detection voltage	4.25V \pm 0.025V
		Over charge detection delay time	700mS-1300mS
		Over charge release voltage	4.15V \pm 0.05V
5	Over Discharge Protection	Over discharge detection voltage	/
		Over discharge detection delay time	/
		Over discharge release voltage	/
6	Over Current Protection (1 st Protection)	Over current detection current / Voltage	/
		Detection delay time	/
		Release condition	/
7	Over Current Protection (2 nd Protection)	Over current detection current / Voltage	/
		Detection delay time	/
		Release condition	/
8	Short Circuit Protection	Short circuit detection current (Also depends on your pack's capacity)	300A-550A (external resistance \leq 0.1 Ω)
		Detection delay time	<280 μ S (fixed)
		Detection condition	Cut load/charge to recover
9	Balance	Balance voltage for single cell	4.2V \pm 0.015V
		Balance current for single cell	42mA \pm 5mA
10	Temperature Protection	Temperature Switch	/
		NTC (10KNTC B=3435)	50 $^{\circ}$ C \pm 5 $^{\circ}$ C
11	Resistance	Inner resistance	\leq 20m Ω
12	Temperature	Operating temperature range	0 ~ +85 $^{\circ}$ C
		Storage temperature range	0 ~ +85 $^{\circ}$ C
13	Size (L*W*T)	L60m*W34mm*T10mm	

*Note: Characteristics subject to change without notice.

Connection Diagram



Remarks:

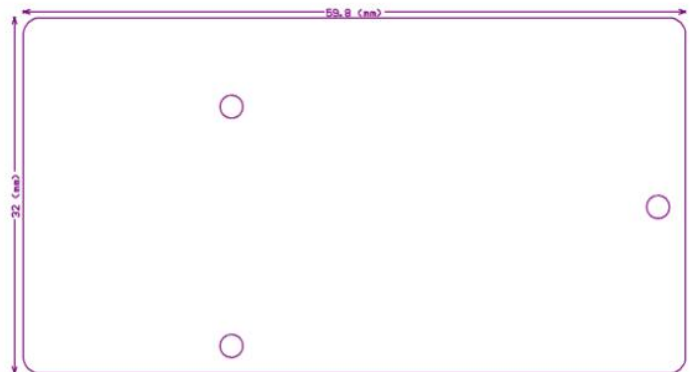
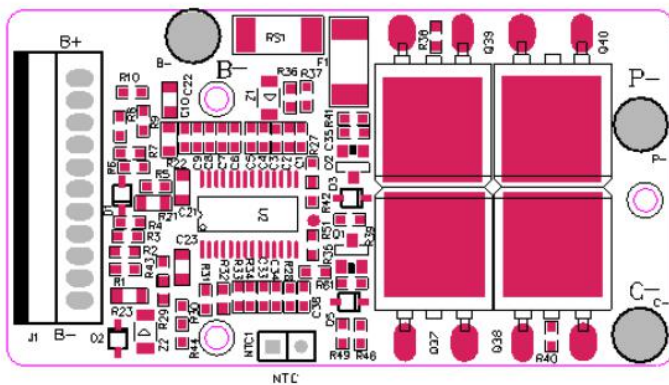
C- Charge, Discharge at different terminals

P+=B+/Charge+/Discharge+

Ch-=Charge-

P-= Discharge-

PCB Layout:



*Note: Characteristics subject to change without notice.